

ArcticSGD - Dopyływ Wód Podziemnych w Zmieniającej się Arktyce: Zasięg i Wpływ Biogeochemiczny

Beata Szymczycha

22.05.2023

Project is operated and co-financed by:



Project is implemented by:



Project is implemented in partnership with:



RAW - Recesja i Więdnięcie – Jaki jest wpływ recesji lodowców, z uchodzących do morza na ląd, na morską produkcję biologiczną i biogeochemię morza w Arktyce?

Beata Szymczycha

22.05.2023

Project is operated and co-financed by:



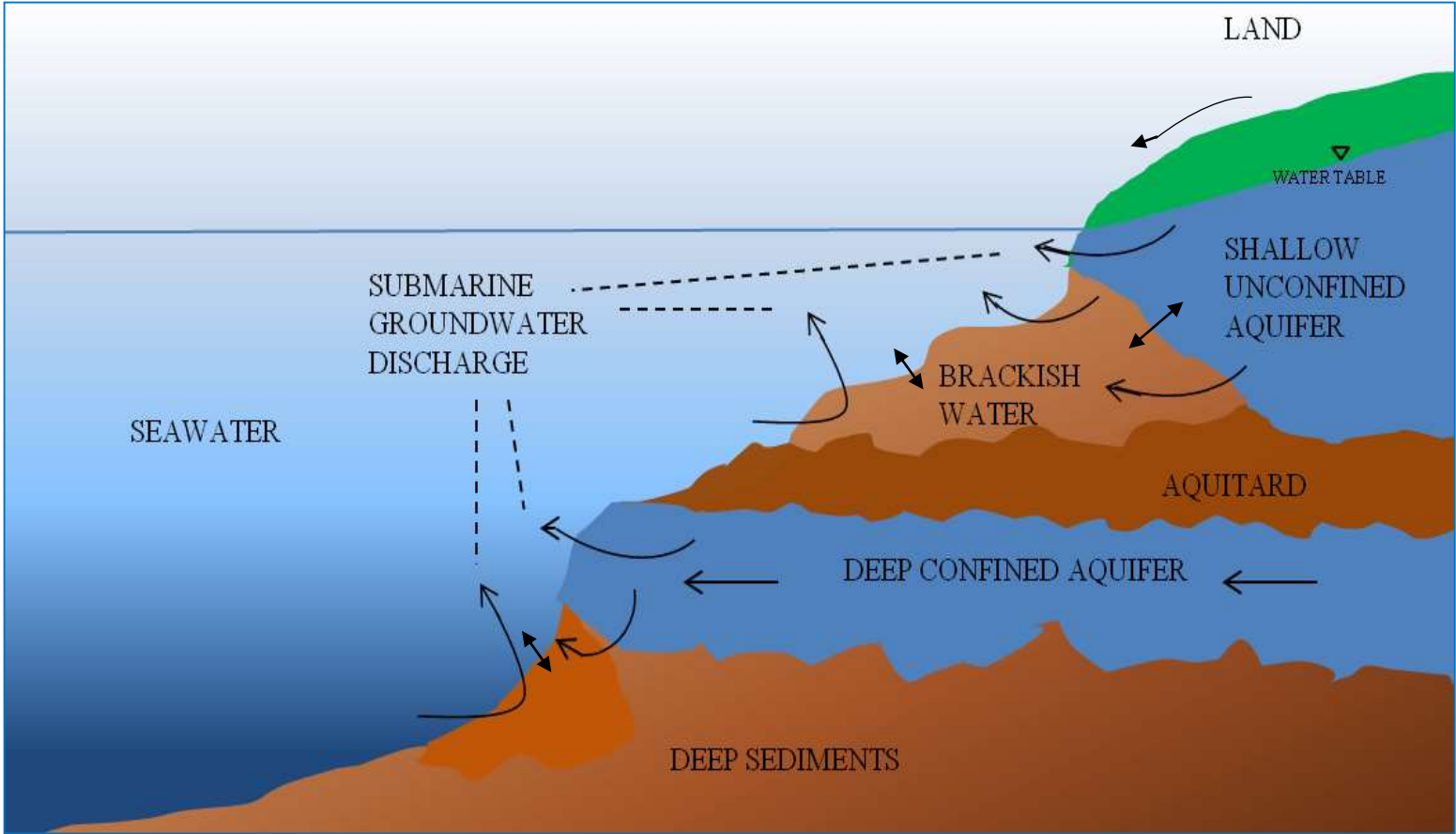
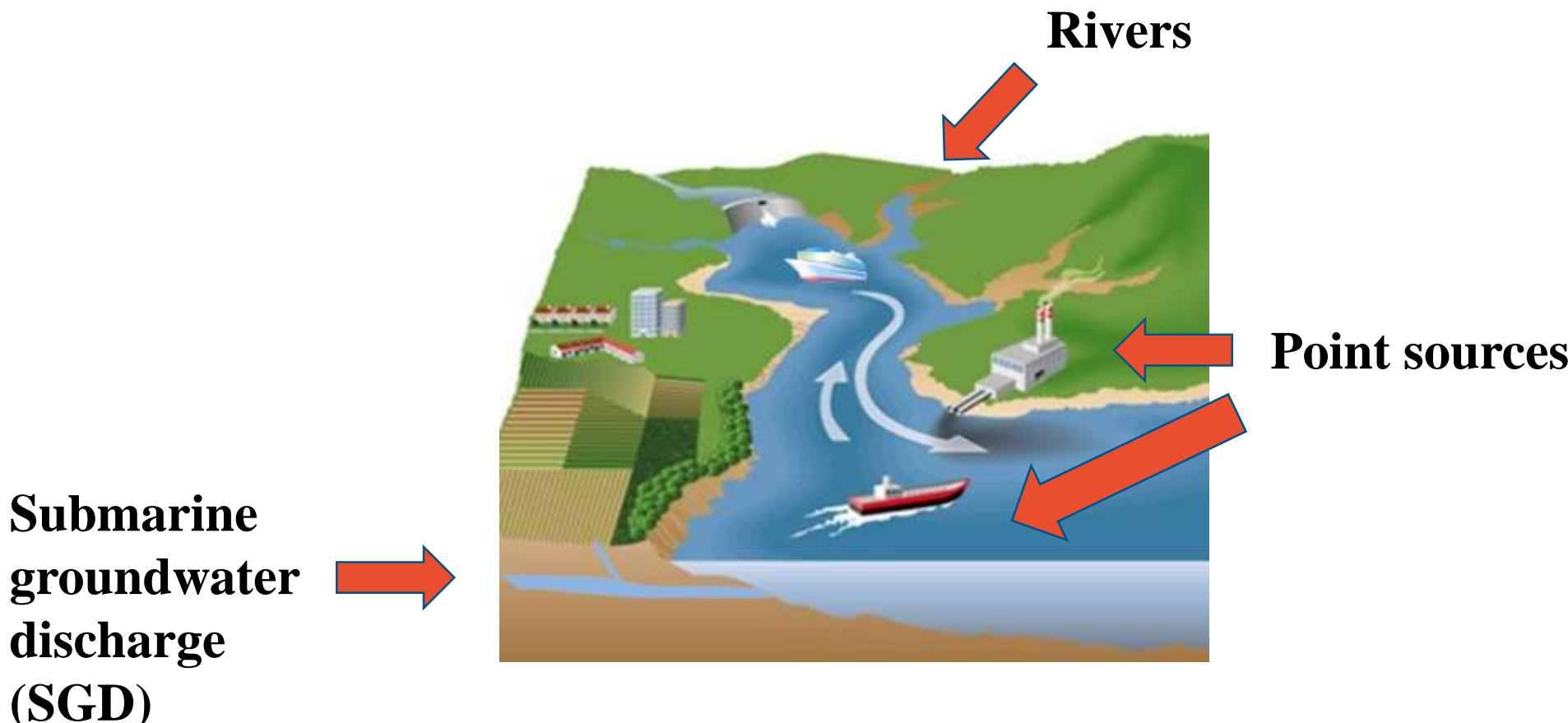
Project is implemented by:



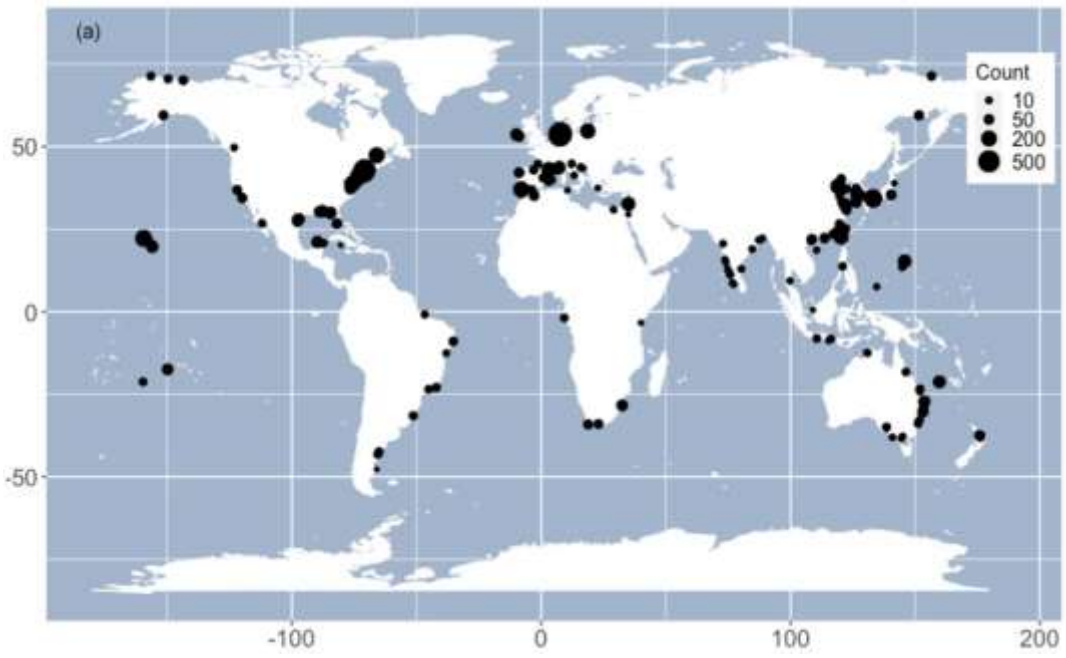
Project is implemented in partnership with:



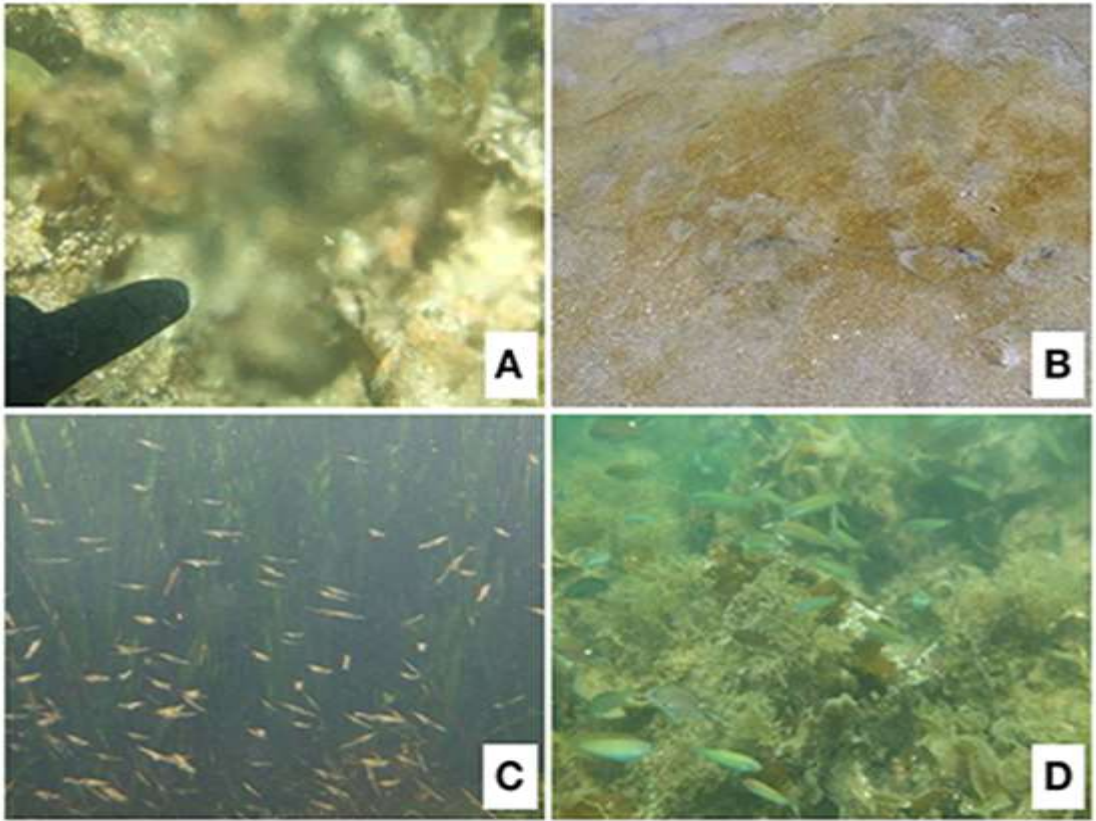
ArcticSGD: Motywacja



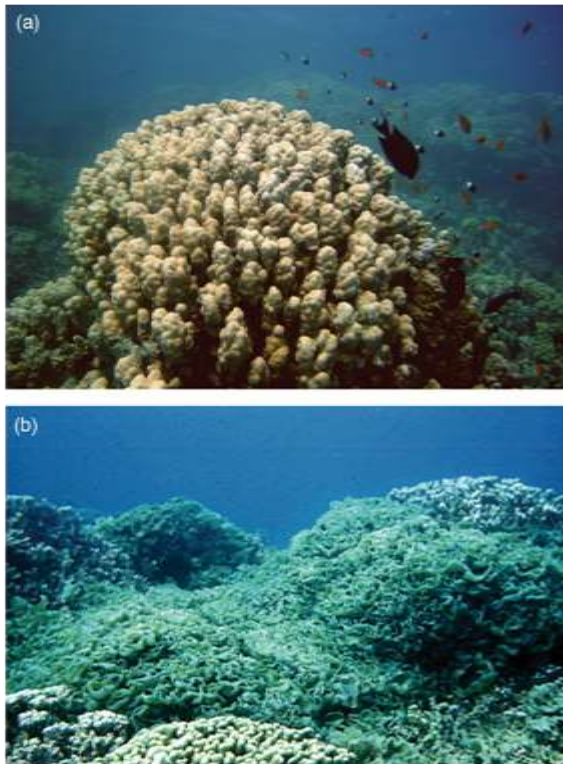
Modified after Burnett, 2006



Knee and Paytan, 2011



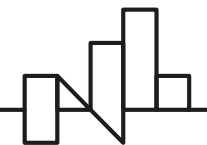
Fujita et al. 2019



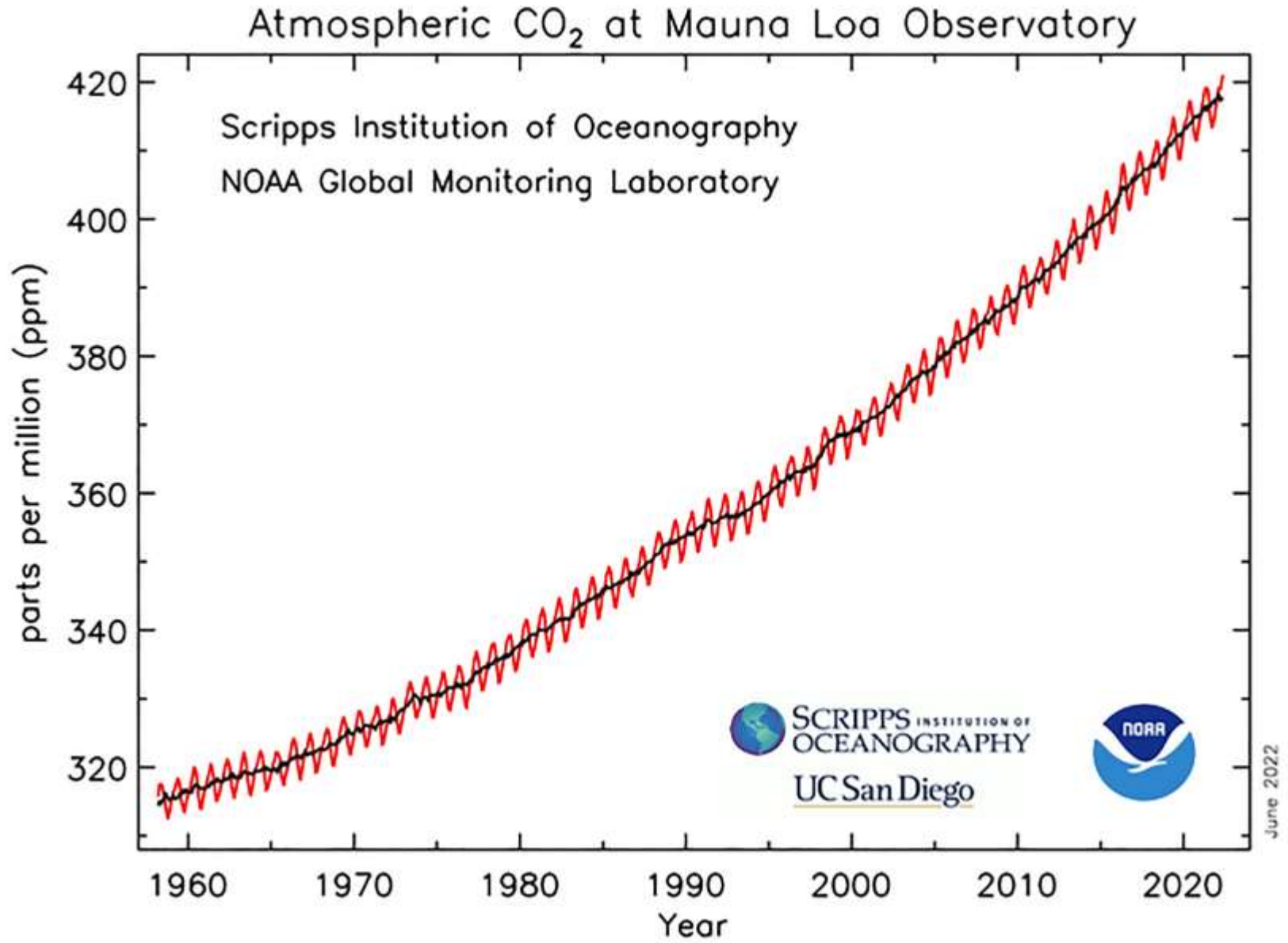
Knee and Paytan, 2011



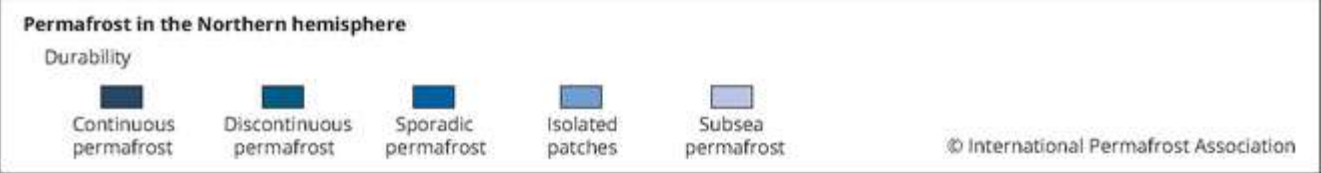
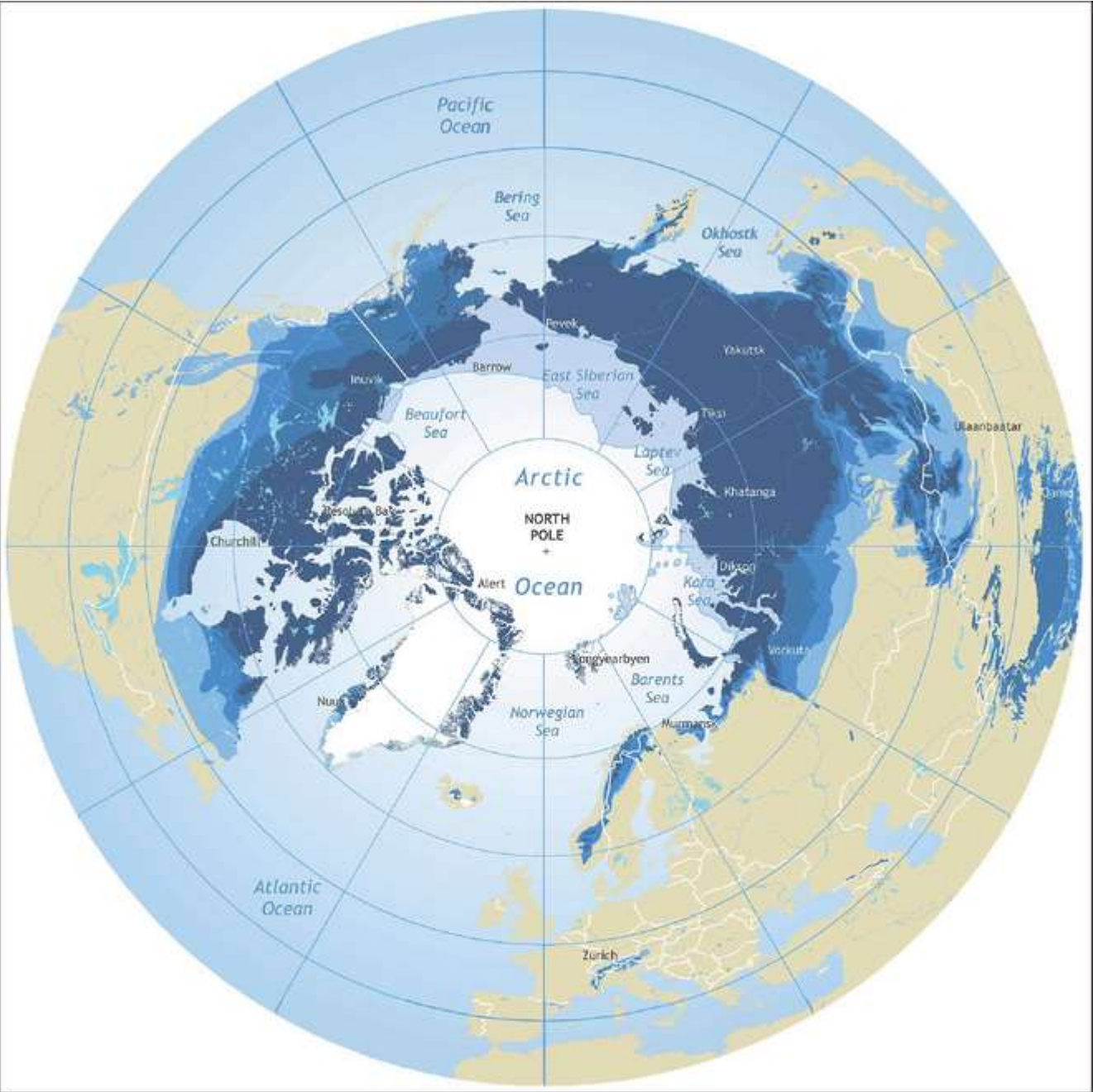
Knee and Paytan, 2011



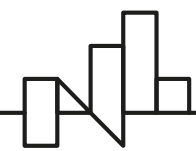
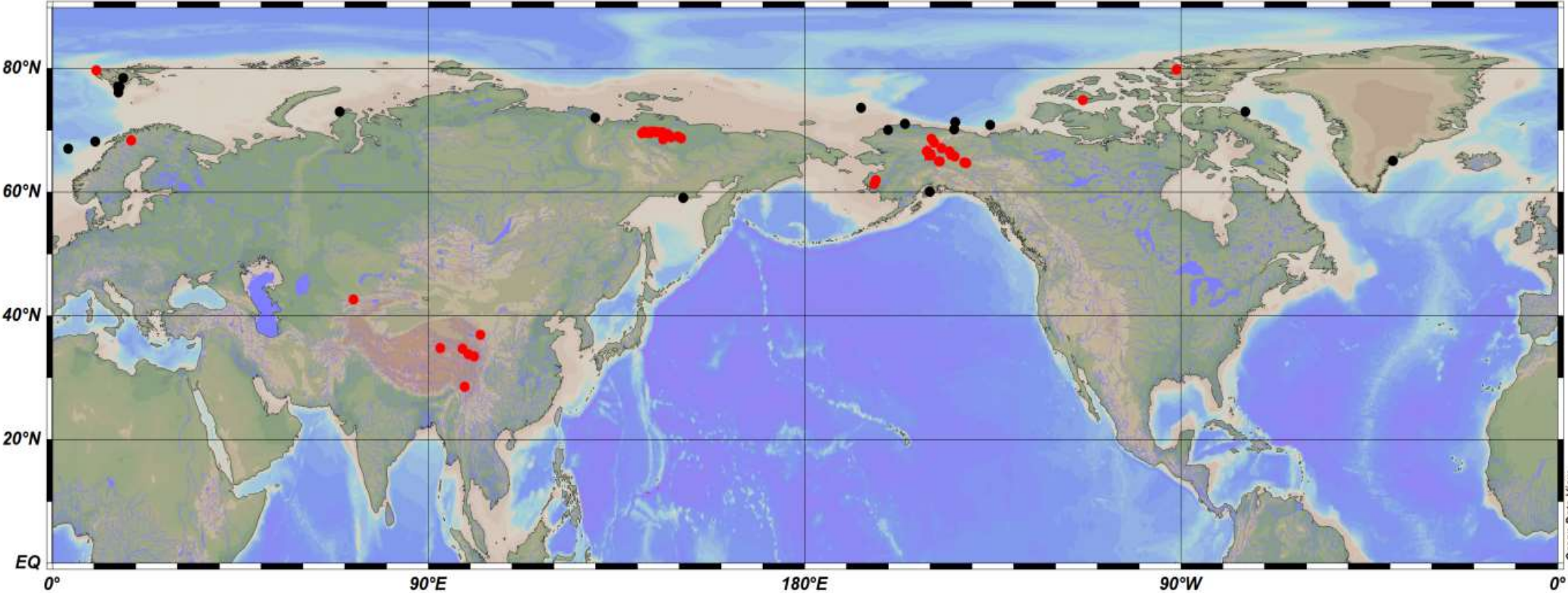
ArcticSGD: Motywacja



NOAA's Mauna Loa Atmospheric Baseline Observatory peaked for 2022



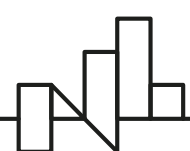
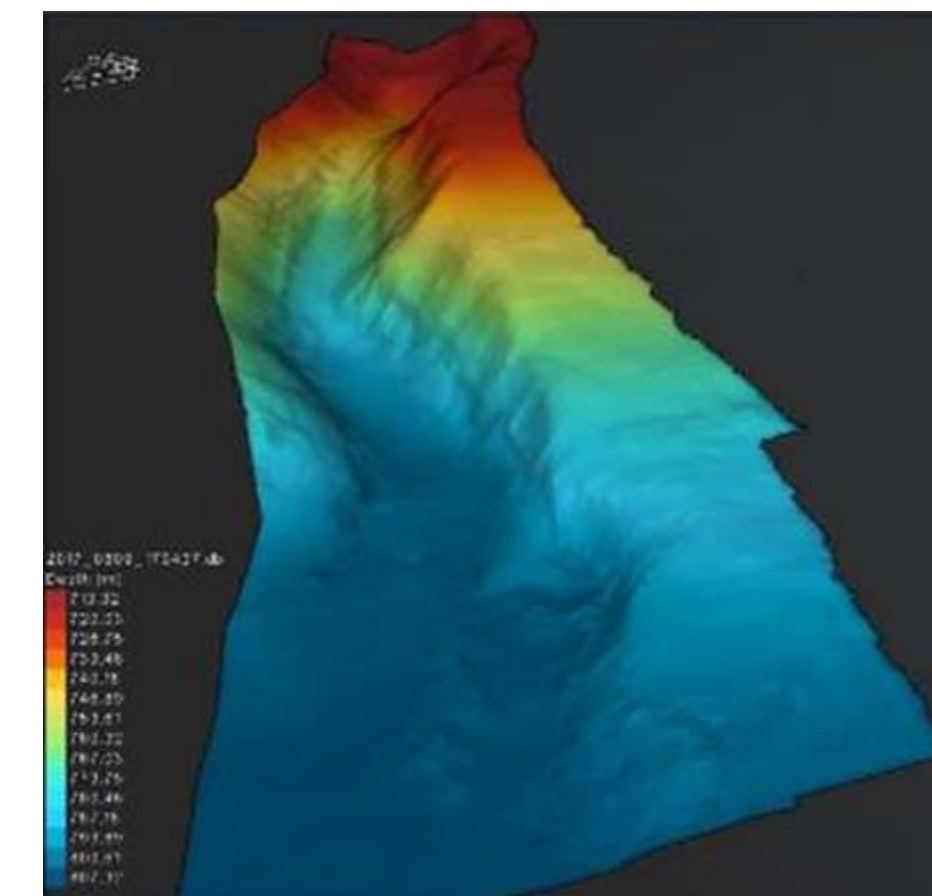
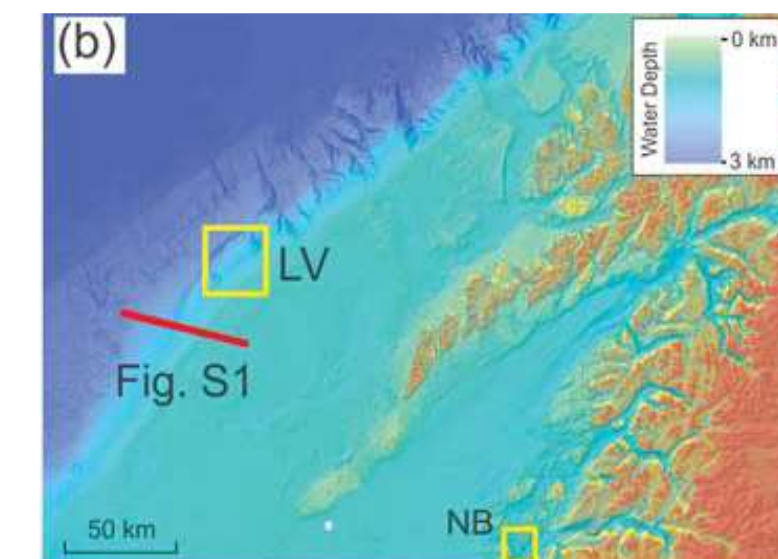
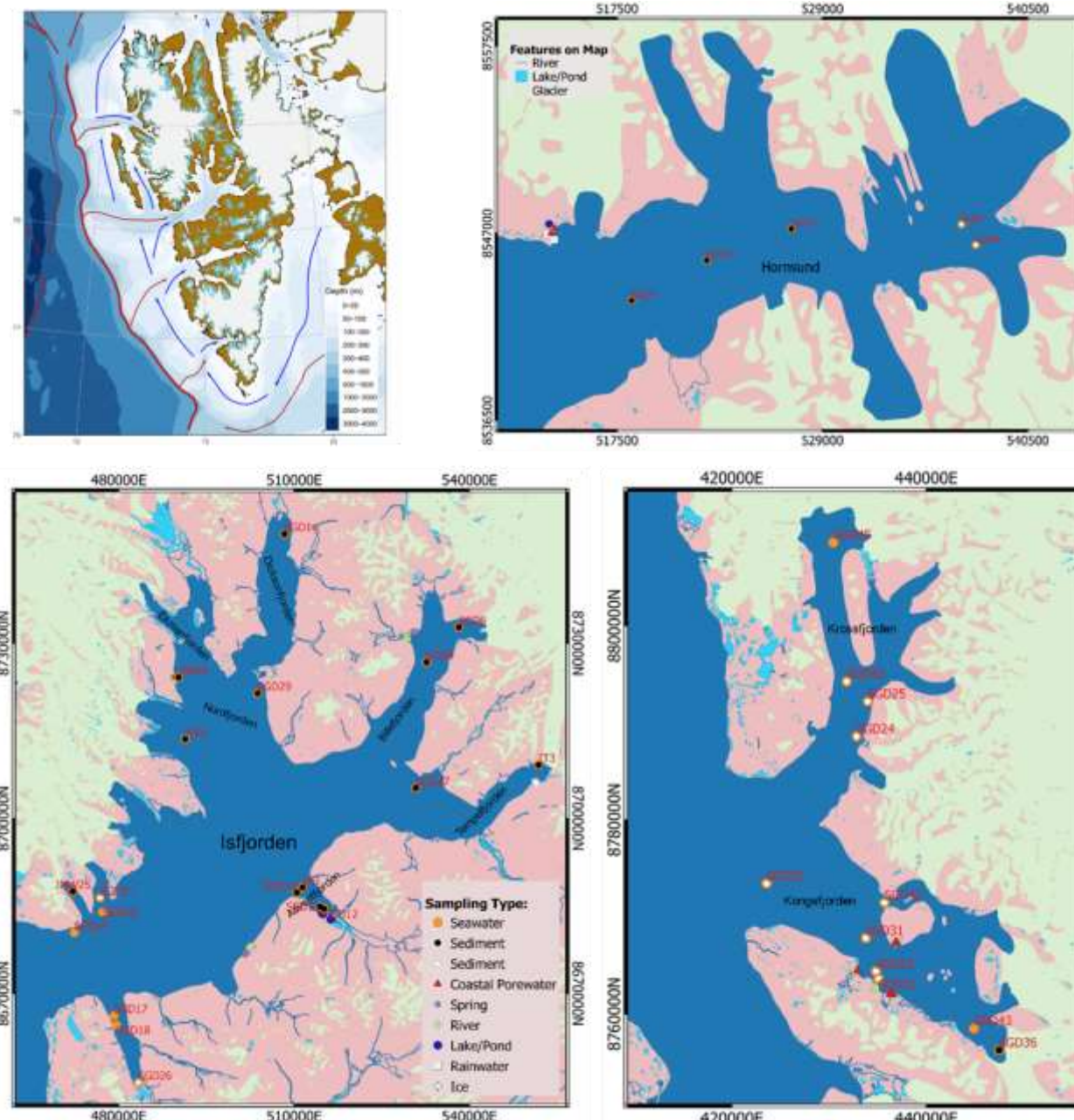
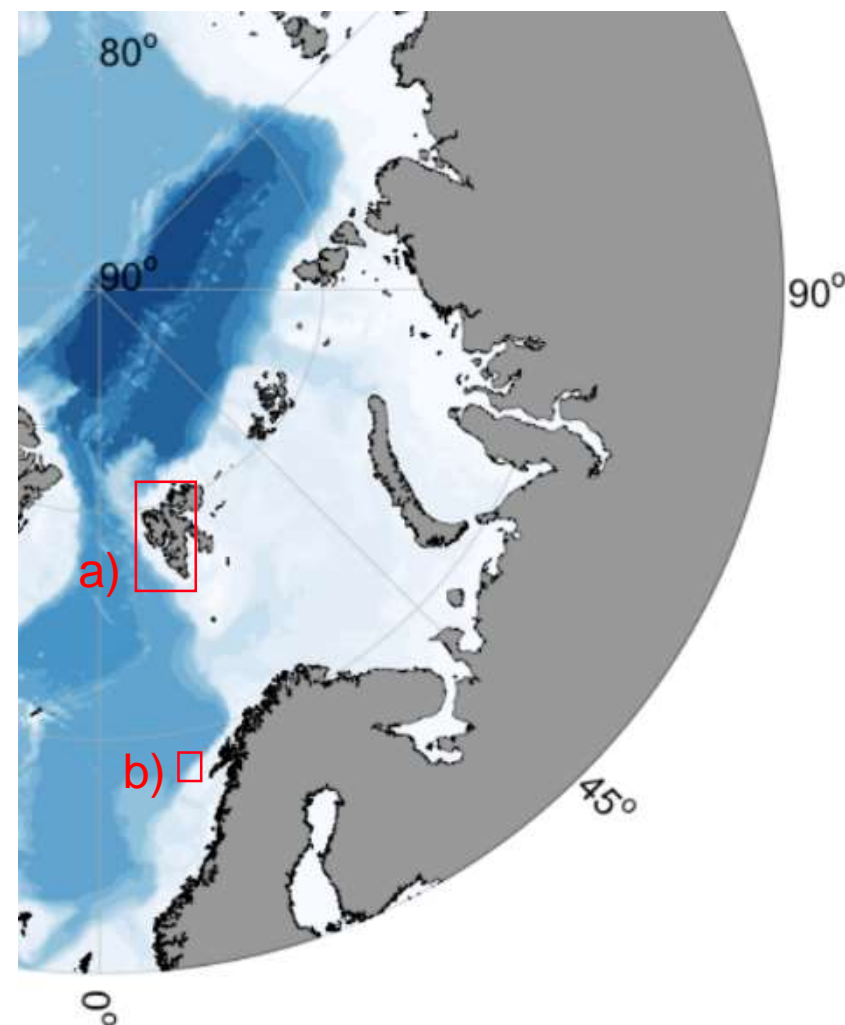
<https://www.eea.europa.eu/data-and-maps/figures/permafrost-in-the-northern-hemisphere>



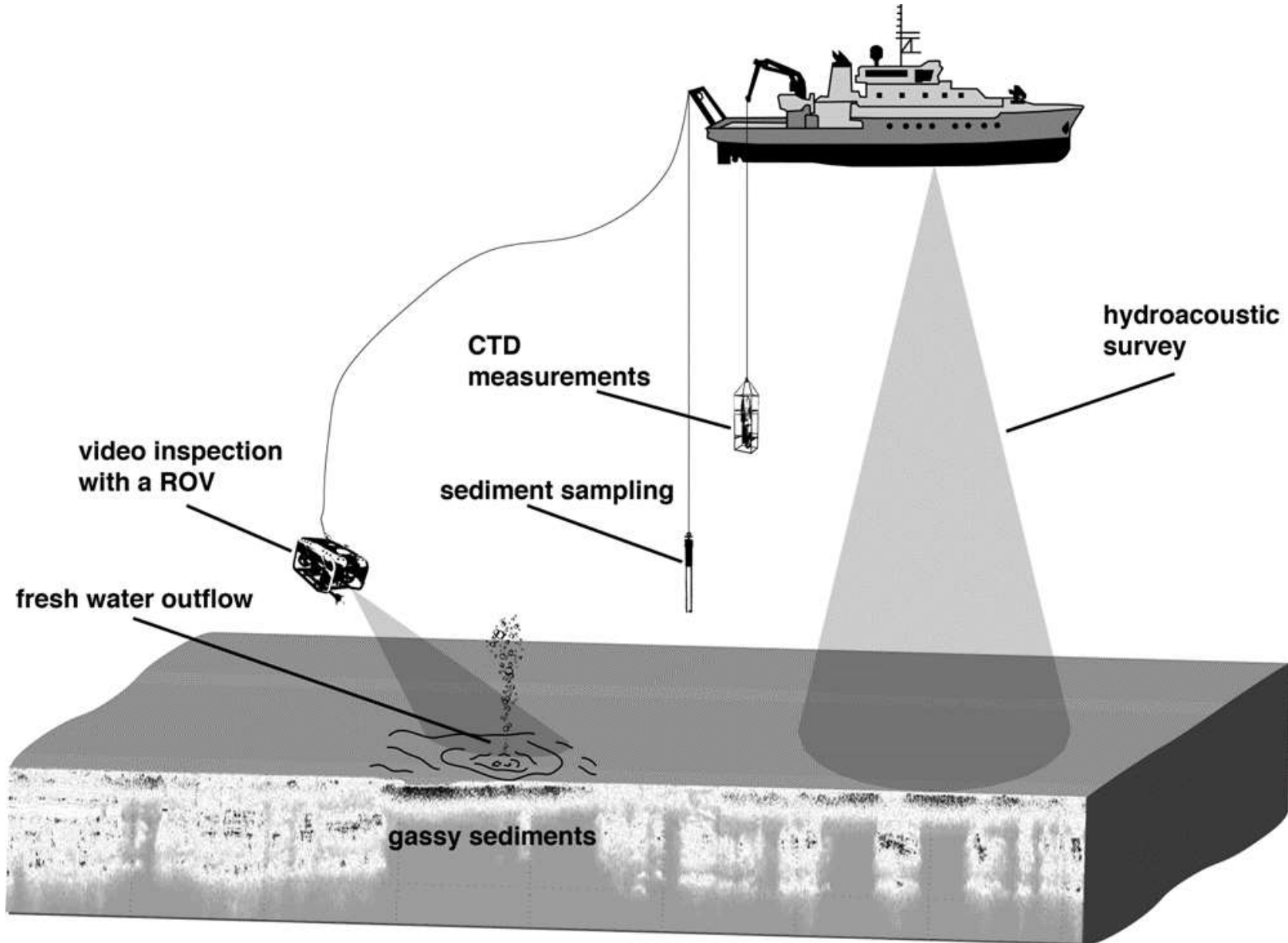
ArcticSGD cele projektu/ zakres badań

- Identyfikacja miejsc wsięku SGD w rejonach polarnych i subpolarnych
- Charakterystyka wód podziemnych
- Określenie jak zmiany klimatu wpływają na cyrkulacje wód podziemnych
- Ocena wpływu wsięku SGD na chemie osadów morskich
- Ocena wpływu wsięku SGD na funkcjonowanie bentosu
- Identyfikacja SGD w kolumnie wody

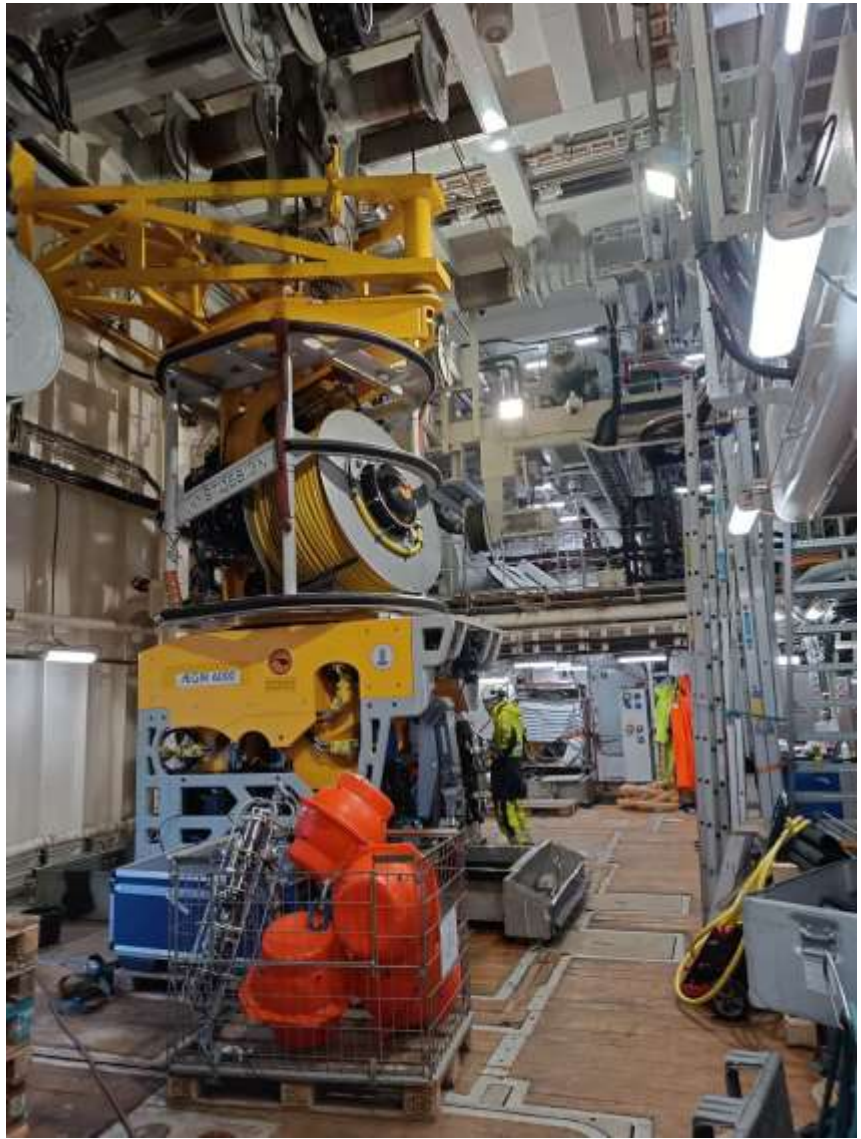
Miejsca badań



ArcticSGD: Materiały i metody



r/v Oceania



r/v Kronprins Haakon



ROV Aurora



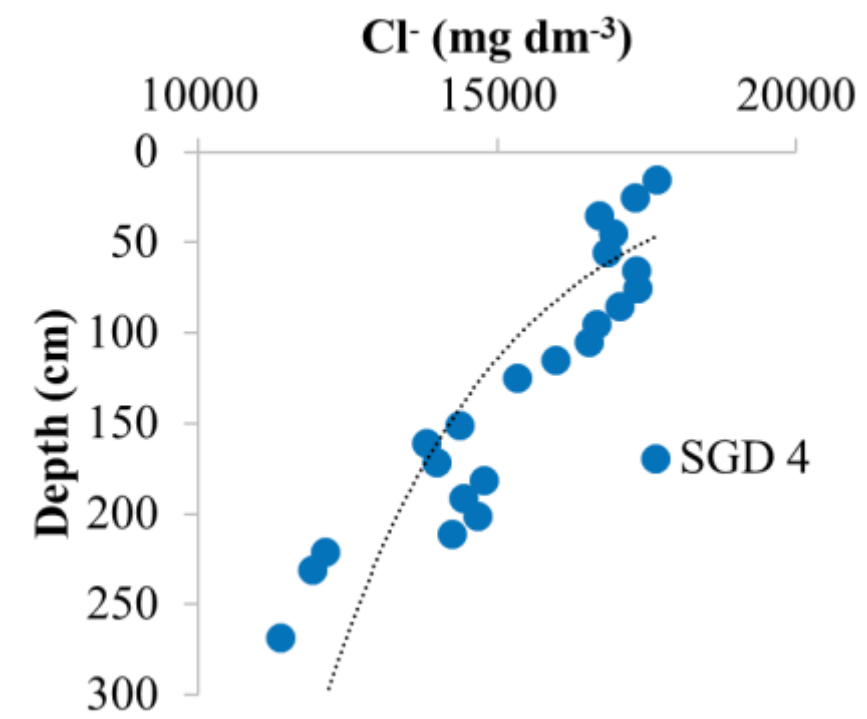
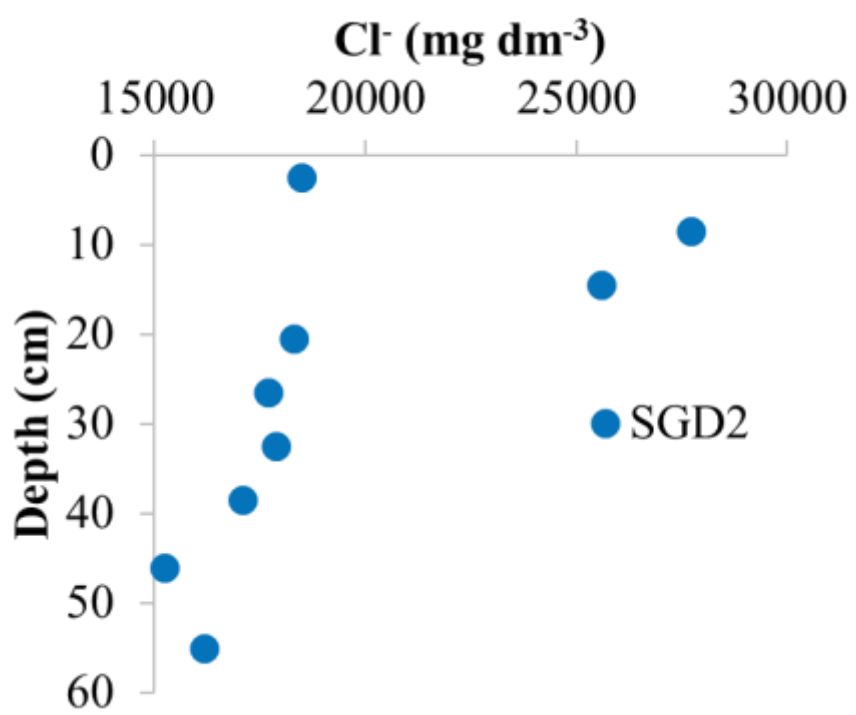
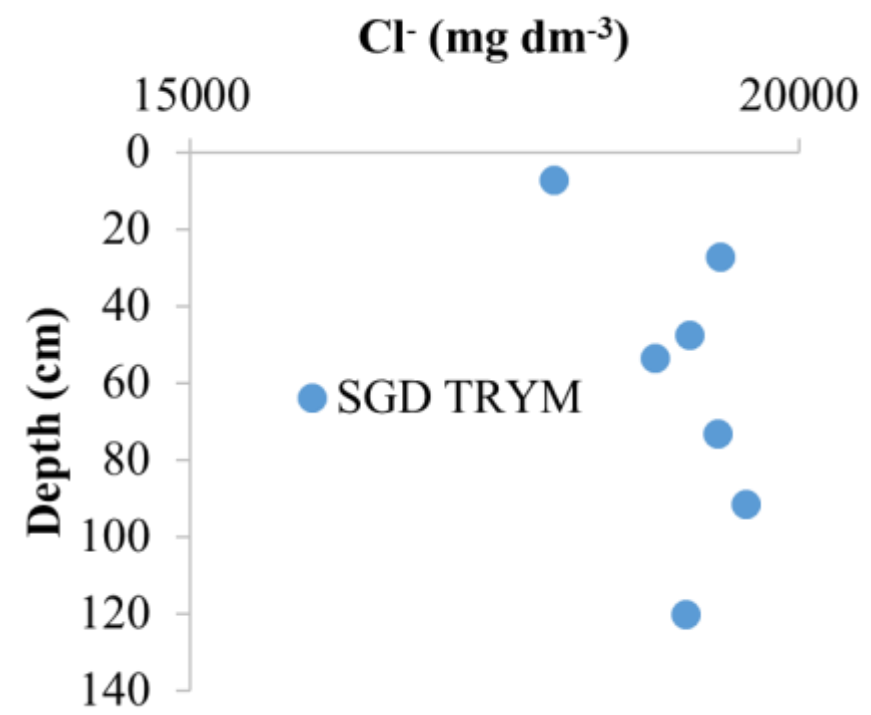
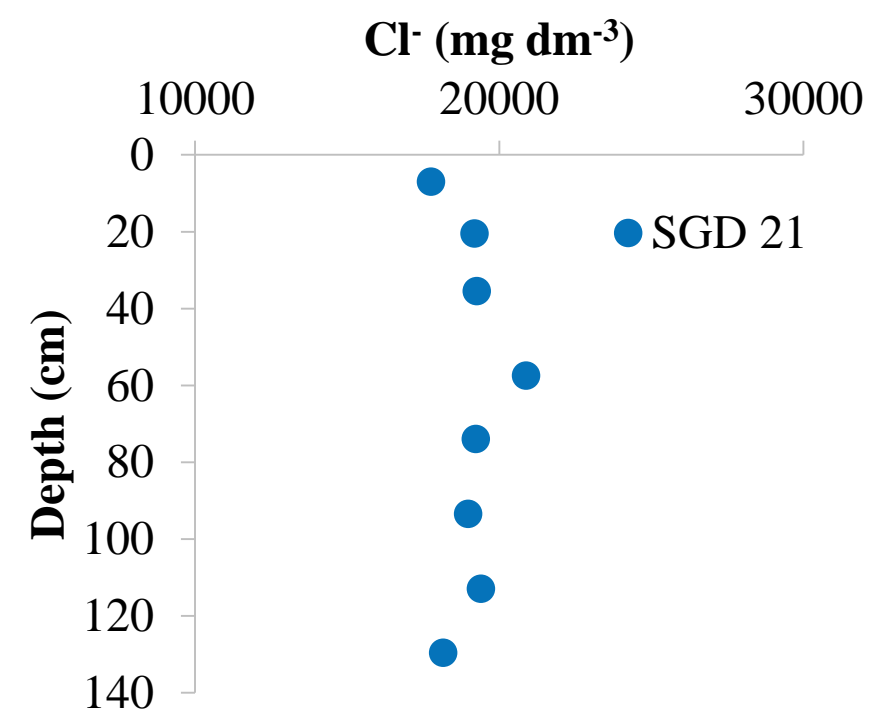
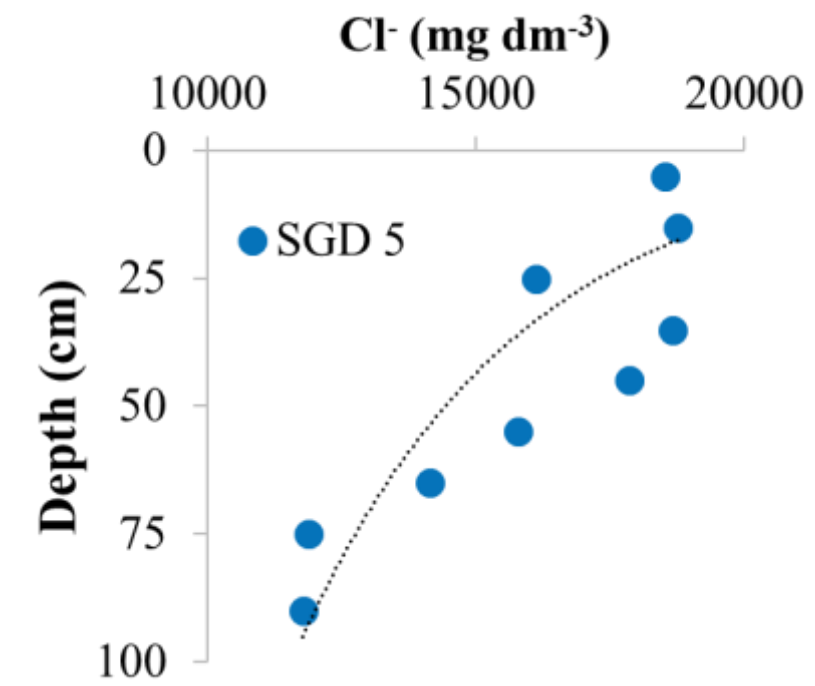
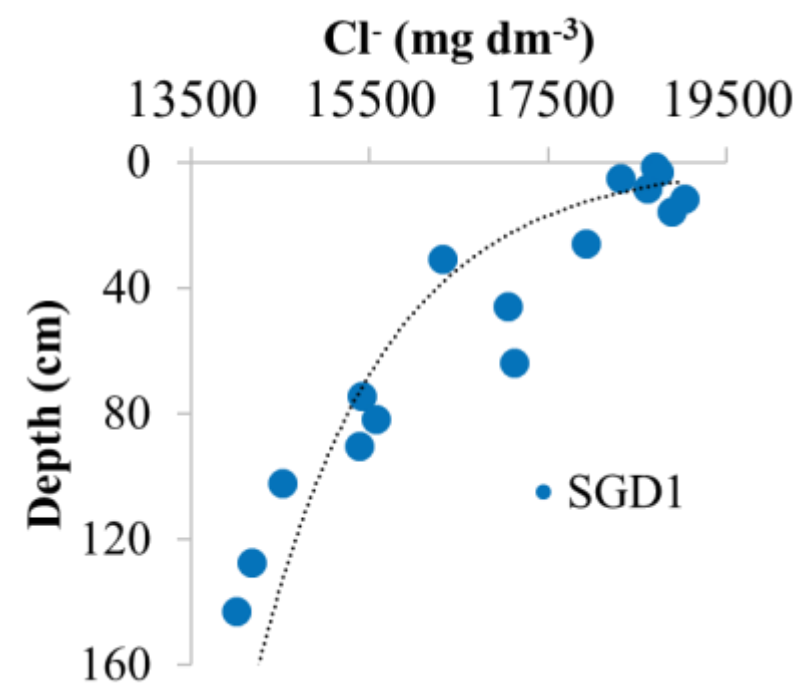
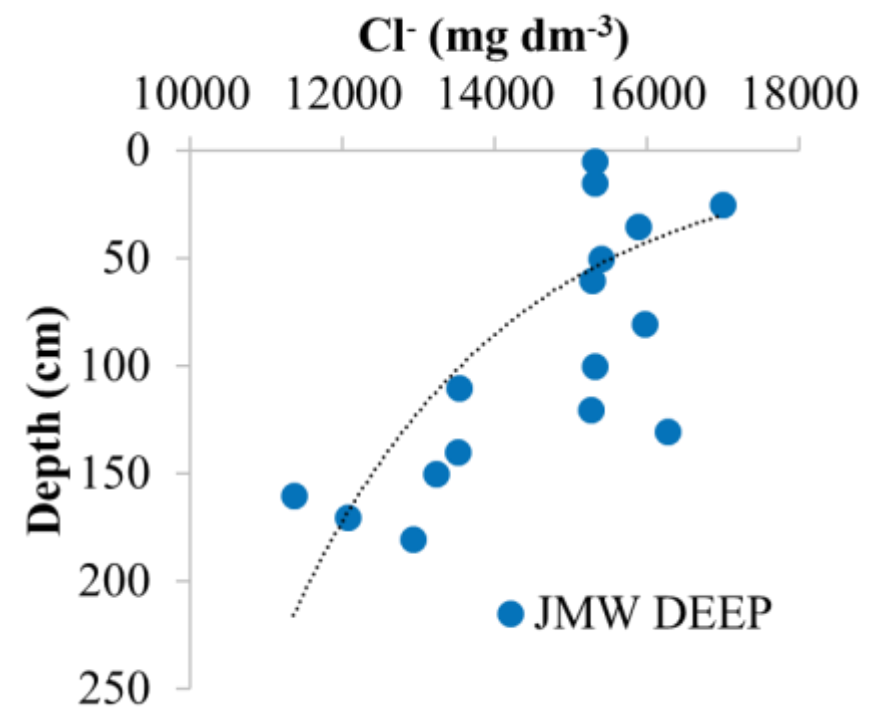
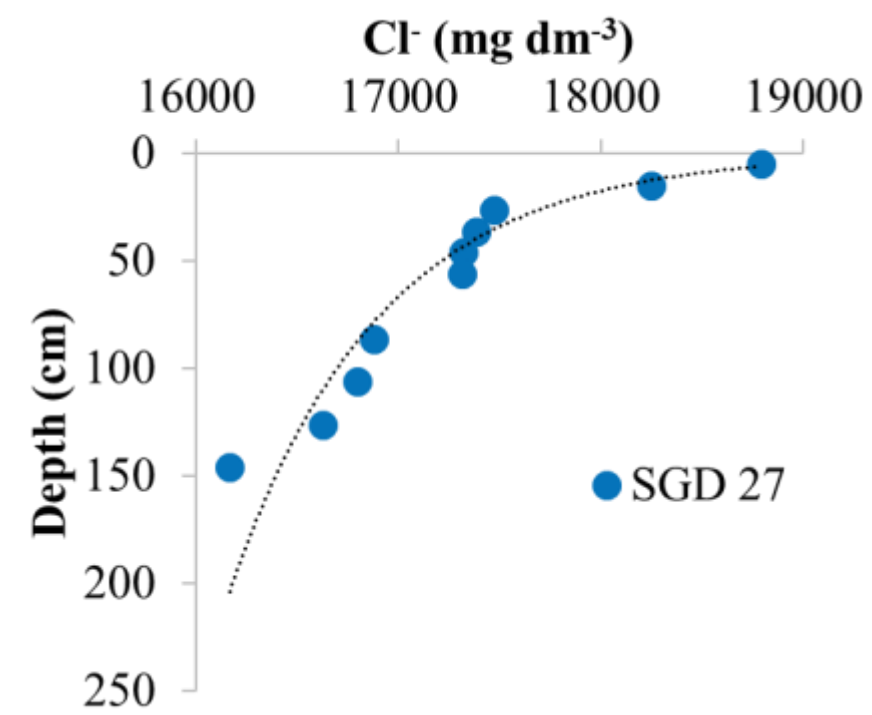
r/v G.O. Sars



ArcticSGD:Charakterystyka dna

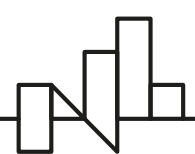


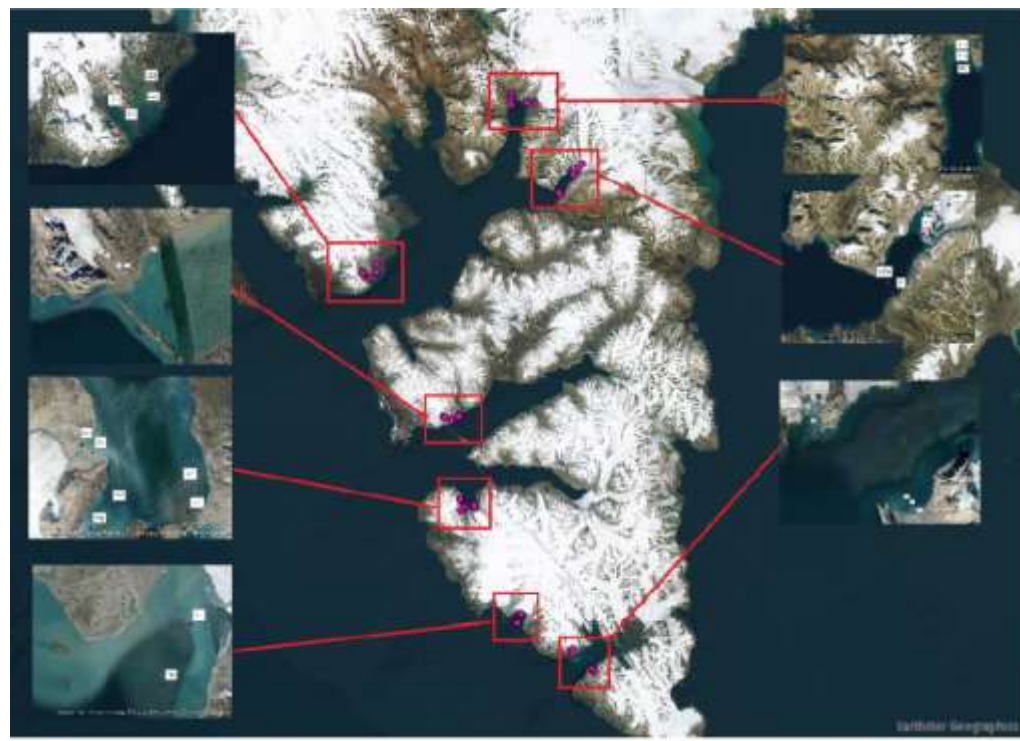
ArcticSGD:Wyniki



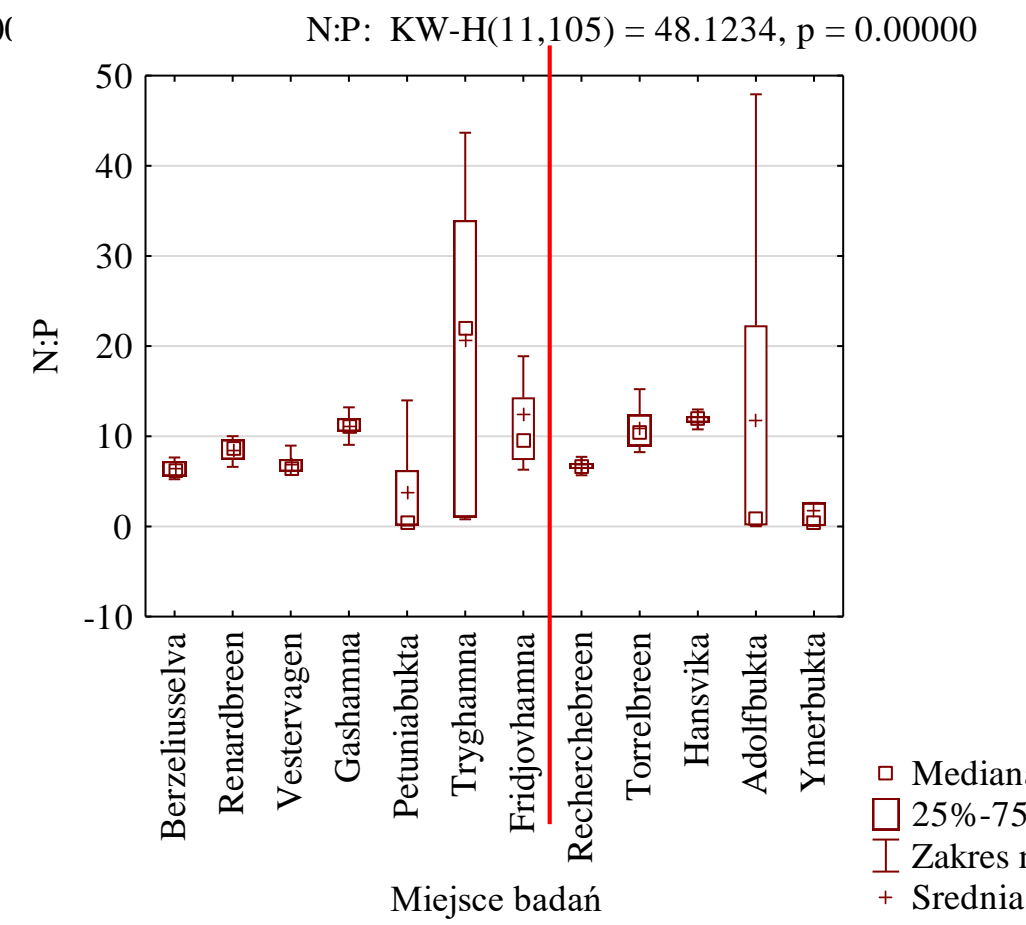
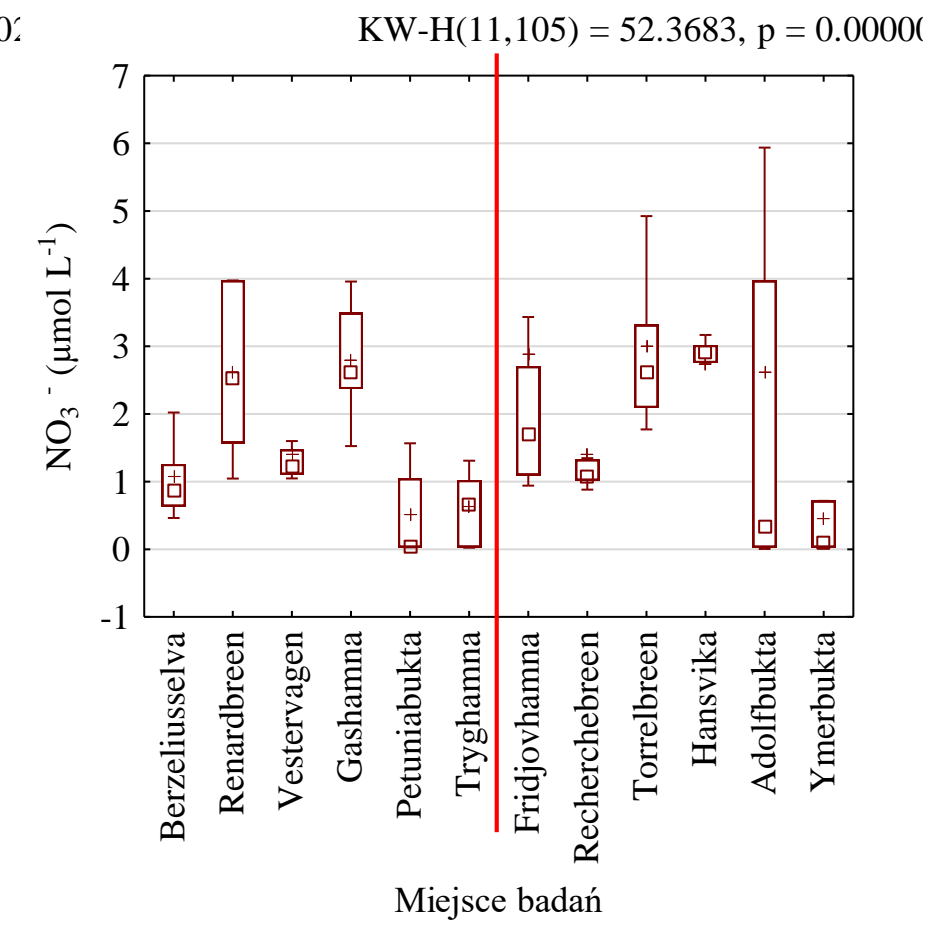
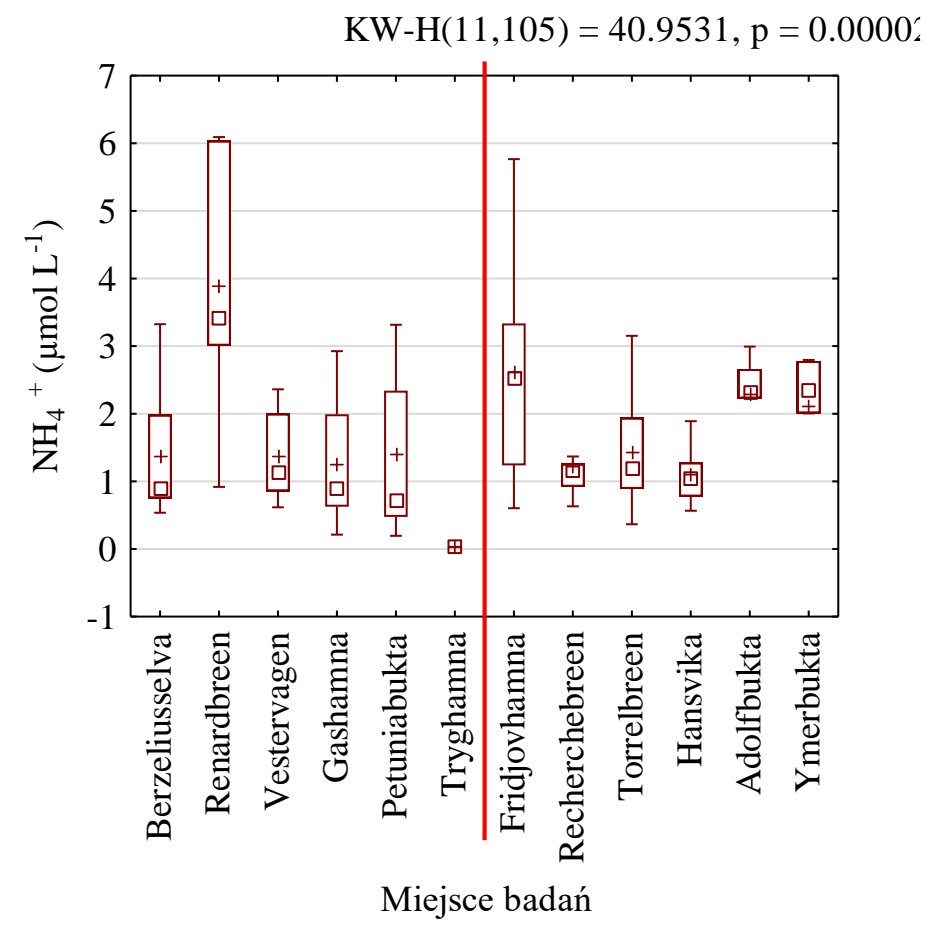
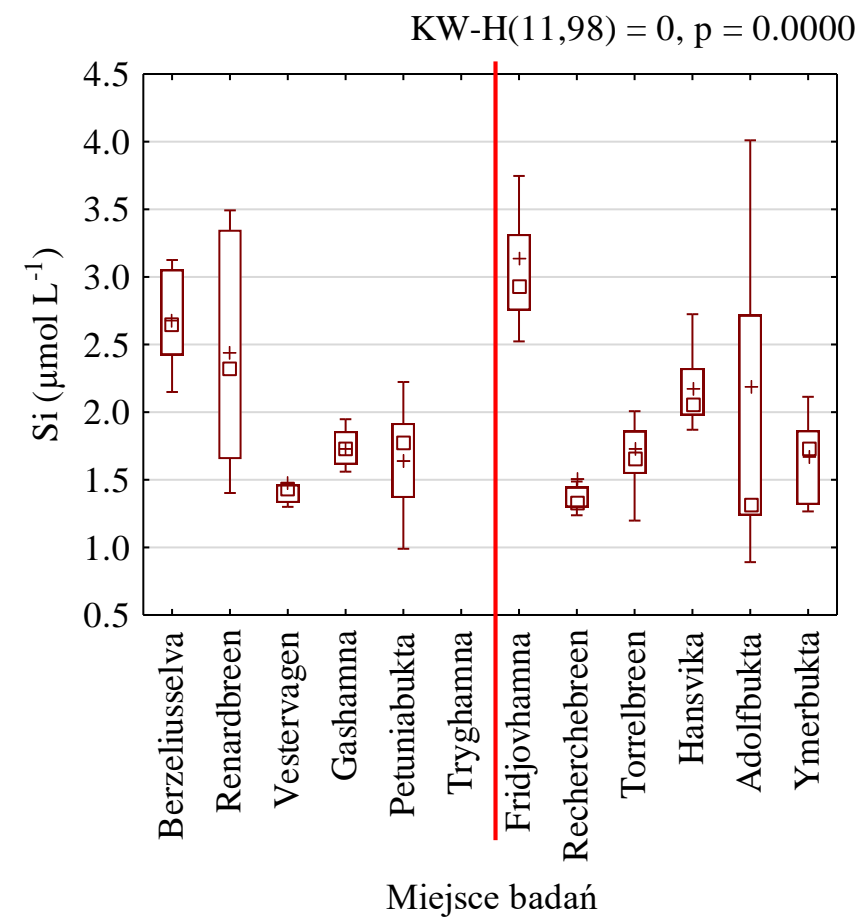
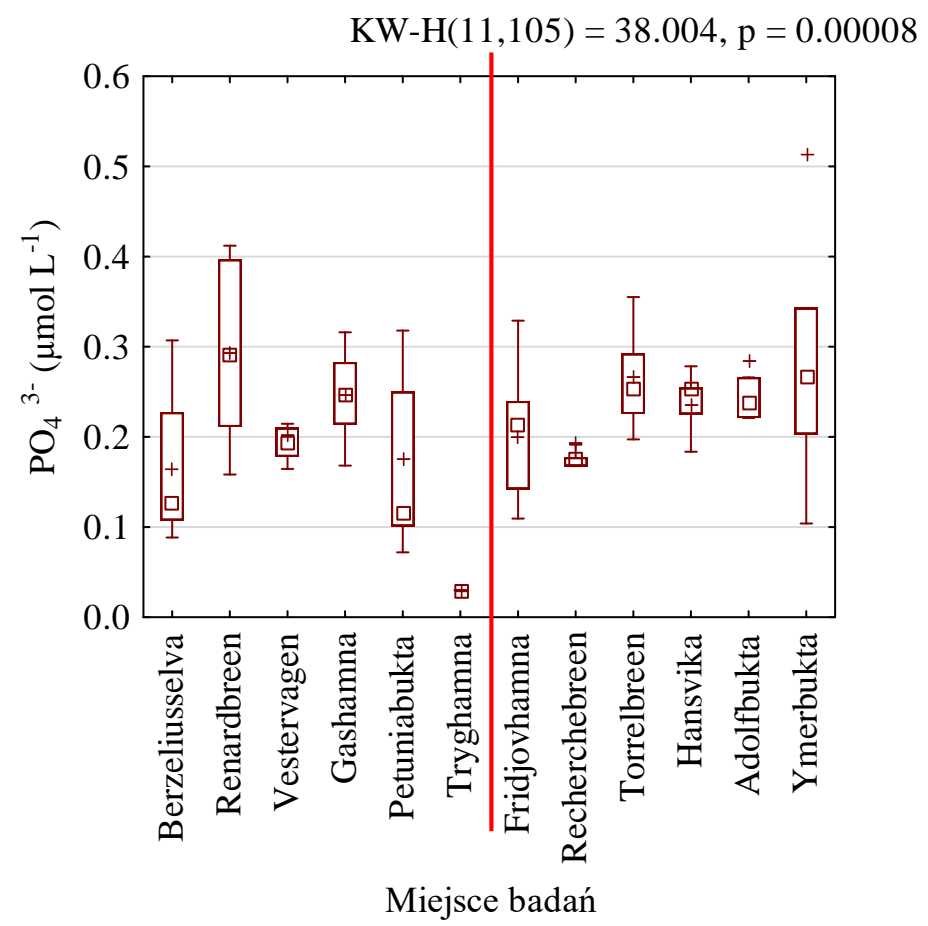
Hornsund FF%

	min	max
SGD1	1.0	26.0
SGD5	0.9	37.8
SGD2	2.4	19.6
SGD4	0.8	40.0
SGD3	0.3	10.0

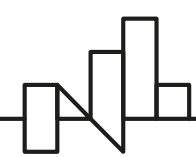
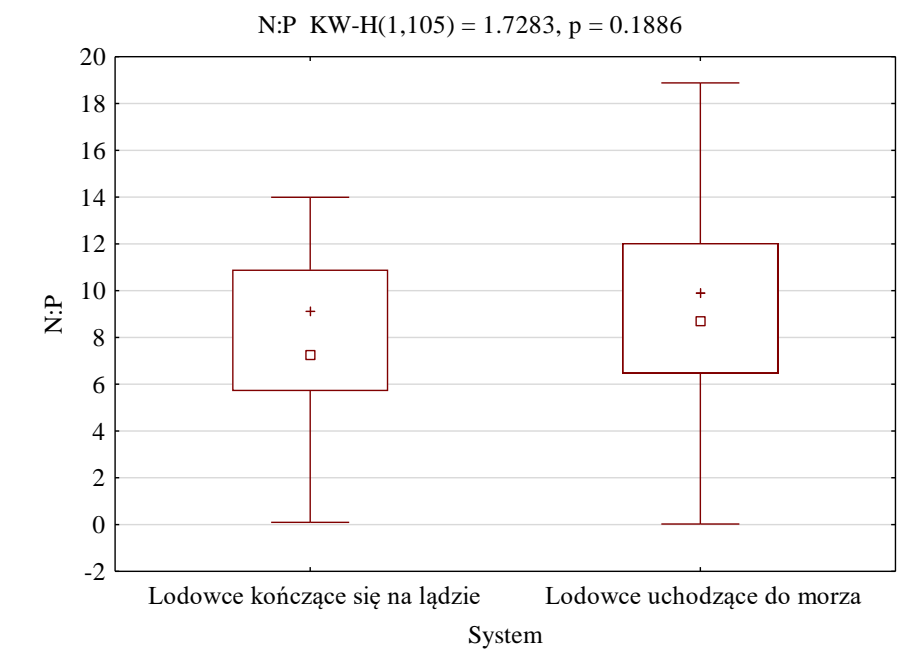
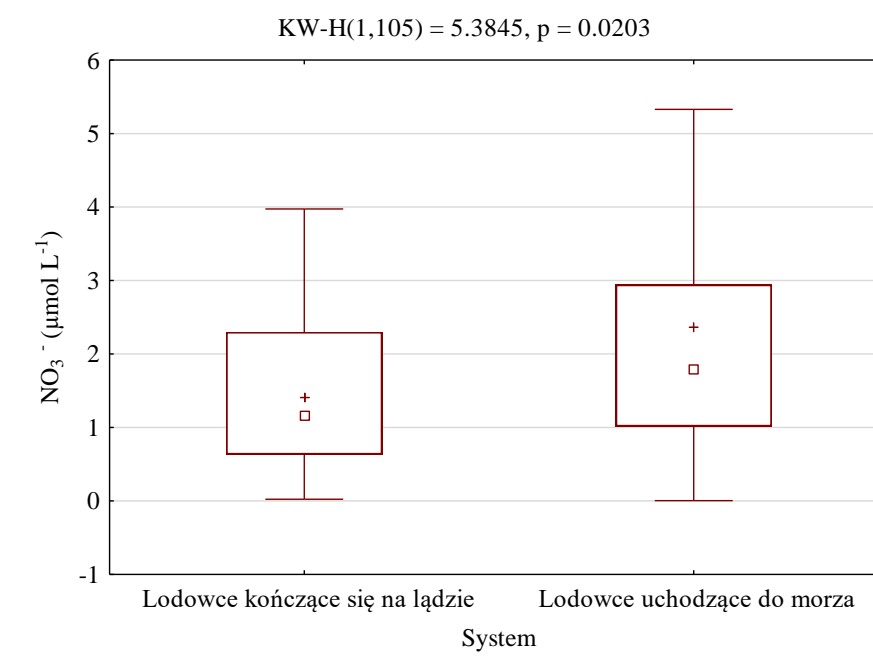
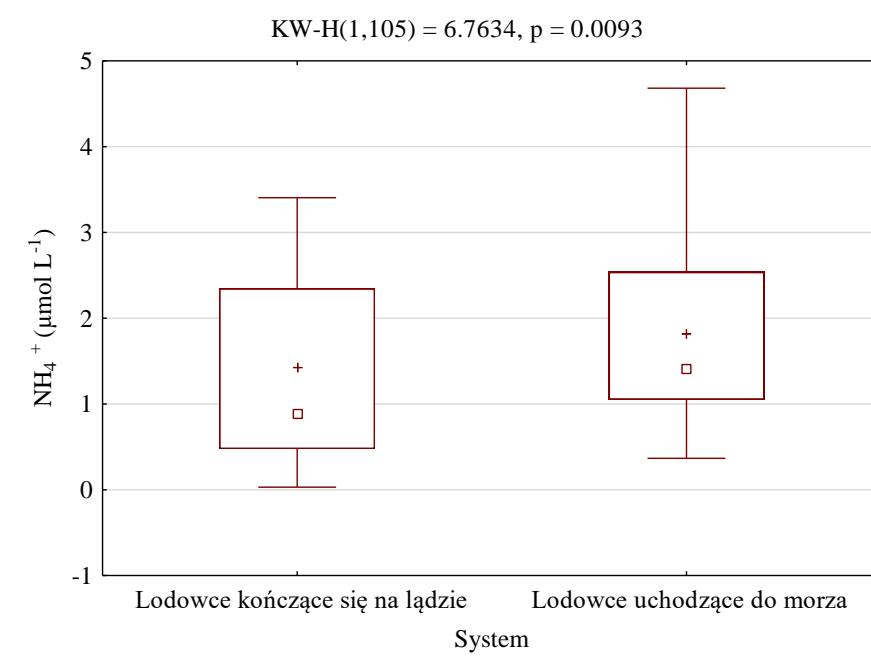
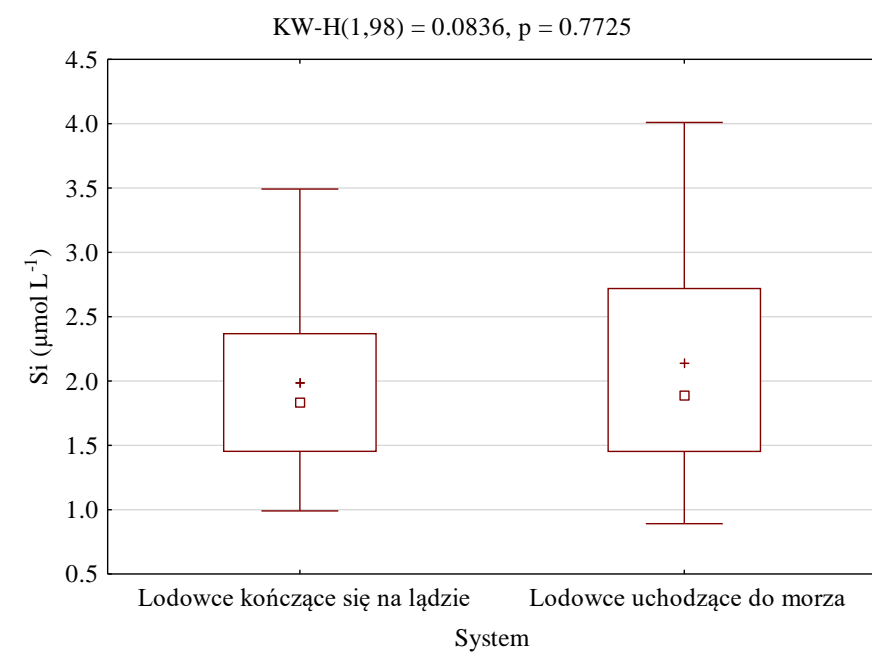
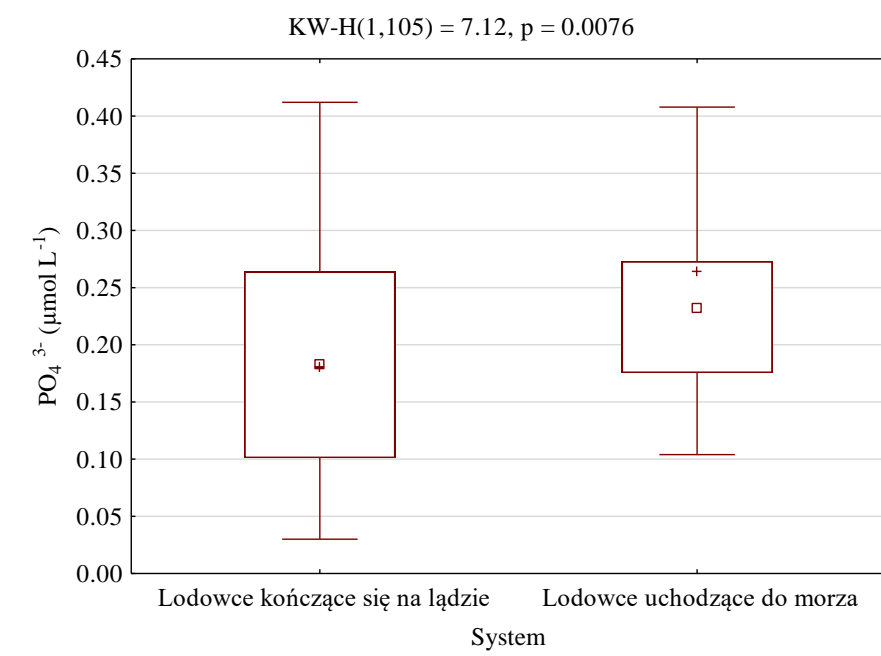




RAW



- Mediana
- ▭ 25%-75%
- ┆ Zakres nieodstających
- + Średnia



Dziękuję za uwagę!

www.eeagrants.org

Facebook, Twitter, LinkedIn, Instagram

YouTube: EEANorwayGrants

Mail: info-fmo@efta.int

Project is operated and co-financed by:



Project is implemented by:



Project is implemented in partnership with:

